

**Mouse Gata6 Antibody (C-term)**  
**Purified Rabbit Polyclonal Antibody (Pab)**  
**Catalog # AP20878c****Specification**

---

**Mouse Gata6 Antibody (C-term) - Product Information**

Application	WB,E
Primary Accession	<a href="#">Q61169</a>
Reactivity	Mouse, Rat
Host	Rabbit
Clonality	Polyclonal
Isotype	Rabbit IgG
Calculated MW	59307

**Mouse Gata6 Antibody (C-term) - Additional Information****Gene ID** 14465**Other Names**

Transcription factor GATA-6, GATA-binding factor 6, Gata6

**Target/Specificity**

This Mouse Gata6 antibody is generated from a rabbit immunized with a KLH conjugated synthetic peptide between 544-577 amino acids from the C-terminal region of Mouse Gata6.

**Dilution**

WB~~1:1000

E~~Use at an assay dependent concentration.

**Format**

Purified polyclonal antibody supplied in PBS with 0.09% (W/V) sodium azide. This antibody is purified through a protein A column, followed by peptide affinity purification.

**Storage**

Maintain refrigerated at 2-8°C for up to 2 weeks. For long term storage store at -20°C in small aliquots to prevent freeze-thaw cycles.

**Precautions**

Mouse Gata6 Antibody (C-term) is for research use only and not for use in diagnostic or therapeutic procedures.

**Mouse Gata6 Antibody (C-term) - Protein Information****Name** Gata6

**Function** Transcriptional activator that regulates SEMA3C and PLXNA2 (PubMed:[19666519](#)). May regulate genes that protect epithelial cells from bacterial infection (By similarity). Involved in gene regulation specifically in the gastric epithelium (By similarity). Involved in bone morphogenetic

protein (BMP)-mediated cardiac-specific gene expression (PubMed:[15329343](#)). Binds to BMP response element (BMPRE) DNA sequences within cardiac activating regions (PubMed:[15329343](#)).

**Cellular Location**

Nucleus.

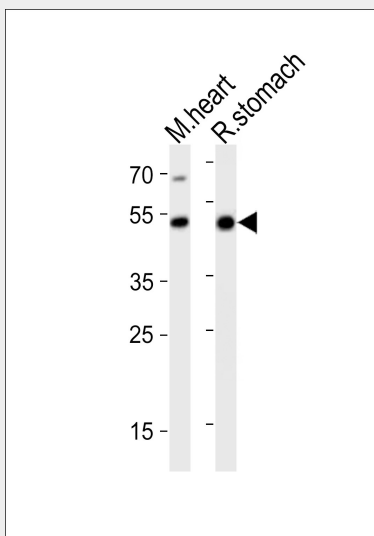
**Tissue Location**

Expressed in myocardium, vascular smooth muscle, gut epithelium, and osteoclasts

**Mouse Gata6 Antibody (C-term) - Protocols**

Provided below are standard protocols that you may find useful for product applications.

- [Western Blot](#)
- [Blocking Peptides](#)
- [Dot Blot](#)
- [Immunohistochemistry](#)
- [Immunofluorescence](#)
- [Immunoprecipitation](#)
- [Flow Cytometry](#)
- [Cell Culture](#)

**Mouse Gata6 Antibody (C-term) - Images**

Western blot analysis of lysates from mouse heart, rat stomach tissue lysate (from left to right), using Gata6 Antibody (C-term)(Cat. #AP20878c). AP20878c was diluted at 1:1000 at each lane. A goat anti-rabbit IgG H&L(HRP) at 1:10000 dilution was used as the secondary antibody. Lysates at 20ug per lane.

**Mouse Gata6 Antibody (C-term) - Background**

Transcriptional activator that regulates SEMA3C and PLXNA2. Involved in gene regulation specifically in the gastric epithelium (By similarity).

**Mouse Gata6 Antibody (C-term) - References**

Morrissey E.E.,et al.Dev. Biol. 177:309-322(1996).

Katsuoka F.,et al.Submitted (AUG-1999) to the EMBL/GenBank/DDBJ databases.

Carninci P.,et al.Science 309:1559-1563(2005).

Mural R.J.,et al.Submitted (SEP-2005) to the EMBL/GenBank/DDBJ databases.

Narita N.,et al.Genomics 36:345-348(1996).